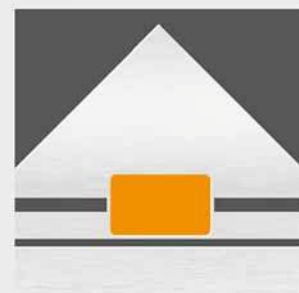
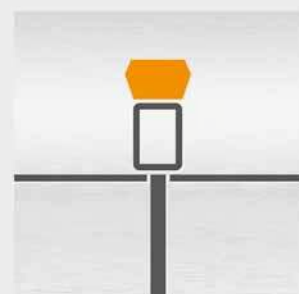
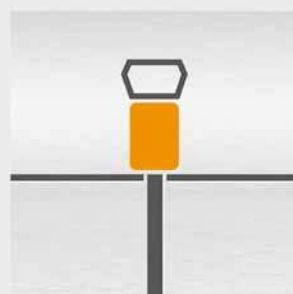
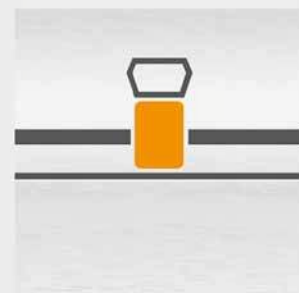


New

VCZ - VTZ

technical data . adaptors . accessories





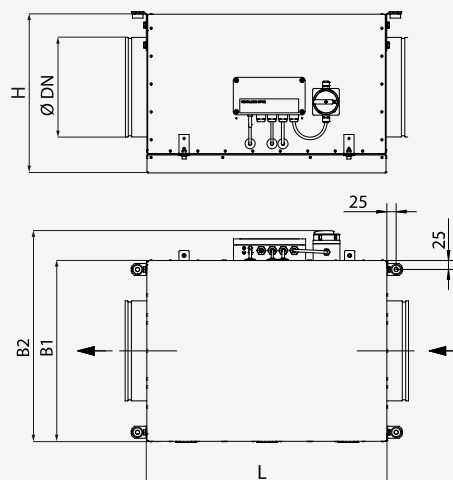
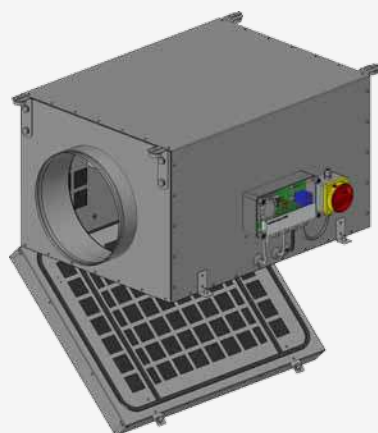
AMTA-R

This document introduces the technical specifications of VCZ - VTZ fans and their main accessories, such as adaptors and the integrated pressure control device for example.

Additional information are available in the VCZ - VTZ commercial brochure and in the installation instructions.

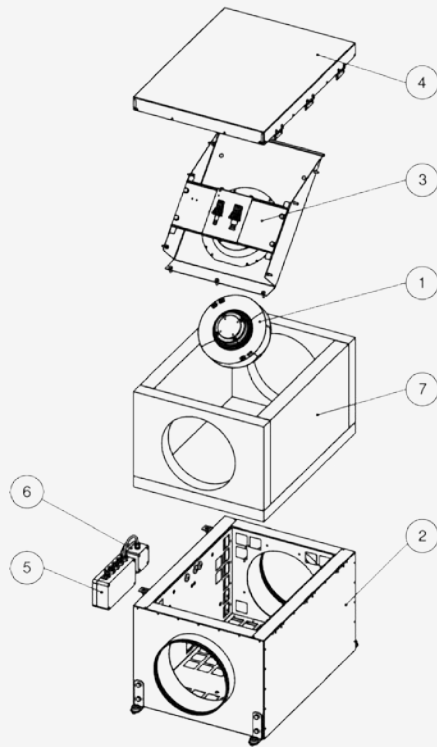


| | |
|---|----|
| VCZ specifications | 4 |
| VTZ specifications | 6 |
| VTZ adaptors | 8 |
| Integrated pressure control device | 19 |
| VTZ accessories | 20 |
| VCZ performance..... | 22 |
| VTZ performance..... | 24 |
| VTZ acoustics and power consumption | 26 |



| Collective fans for attics | | VCZ0 | VCZ1 | VCZ2 | VCZ3 |
|--|-------------------|--|-----------------------|-----------------------|-----------------------|
| Standard code | | VCZ1084 | VCZ1085 | VCZ1086 | VCZ1087 |
| Airflow characteristics | | | | | |
| Max. airflow @ 100 Pa | m ³ /h | 500 | 1 000 | 1 620 | 2 660 |
| Max. pressure | Pa | 300 | 300 | 300 | 300 |
| Pressure control device | | ■ | ■ | ■ | ■ |
| Acoustics | | | | | |
| Max. sound power level L _w | dB(A) | 79 | 68 | 79 | 75 |
| Electrics | | | | | |
| Power supply | | 230 VAC / 50 Hz | 230 VAC / 50 Hz | 230 VAC / 50 Hz | 230 VAC / 50 Hz |
| Motor type | | EC | EC | EC | EC |
| Max. power | W | 83 | 168 | 150 | 450 |
| IP degrees of protection (motor) | | IP 54 | IP 54 | IP 54 | IP 54 |
| Characteristics | | | | | |
| Weight | kg | 22 | 24 | 32 | 34 |
| Colour | | metal | metal | metal | metal |
| Material (envelope) | | galvanised steel | galvanised steel | galvanised steel | galvanised steel |
| Dimensions (H - L - B1 - B2) | mm | 350 - 600 - 455 - 528 | 400 - 600 - 455 - 528 | 550 - 600 - 545 - 618 | 550 - 600 - 545 - 618 |
| Installation | | | | | |
| Connection | mm | Ø 200 | Ø 250 | Ø 355 | Ø 400 |
| Position | | all positions possible (horizontal, vertical, cover up and down) | | | |
| Terrace installation | | - | - | - | - |
| Roof installation | | - | - | - | - |
| Attic installation (protected) | | ■ | ■ | ■ | ■ |
| Maintenance | | | | | |
| Proximity switch | | ■ | ■ | ■ | ■ |
| Openable cover to access the propeller | | ■ | ■ | ■ | ■ |
| Working | | | | | |
| Direct driven propeller | | ■ | ■ | ■ | ■ |
| Max. speed | RPM | 3 200 | 3 230 | 1 620 | 2 180 |

Composition



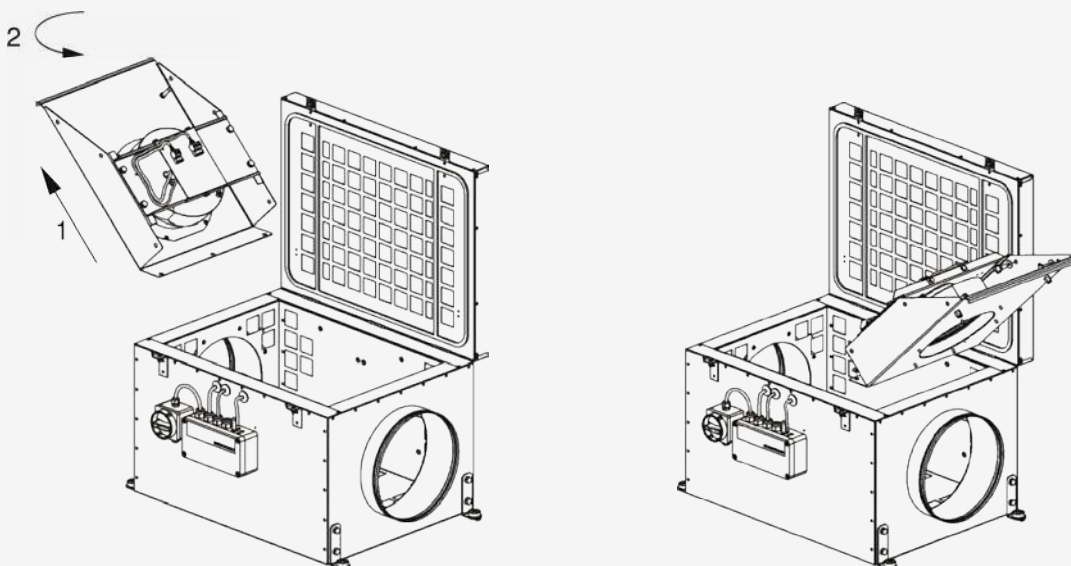
| | |
|---|---------------------------|
| 1 | Fan propeller |
| 2 | Casing |
| 3 | Motor support |
| 4 | Cover* |
| 5 | Pressure control device |
| 6 | Supply |
| 7 | Thermal and acoustic foam |

Change of airflow direction

As a standard on VCZ fans**, the airflow direction can be changed, even when the fan is already installed.

Advantage: for a given piping (means fixed air flow direction) and also given installation position in a corner, it is always possible to install the fan with the control unit and main switch accessible, avoiding any situation where the control unit and the main switch would be hidden on the wall side.

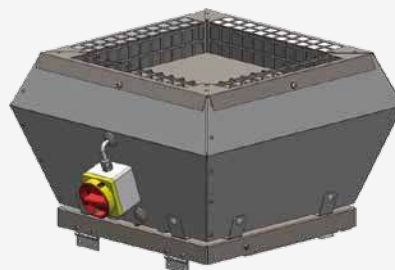
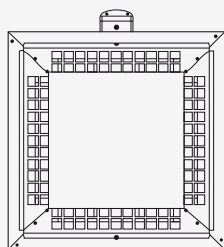
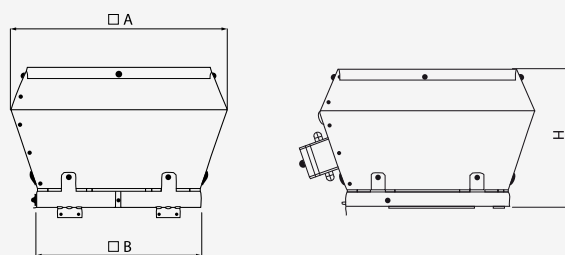
Process to change the airflow direction:



** since November 2012

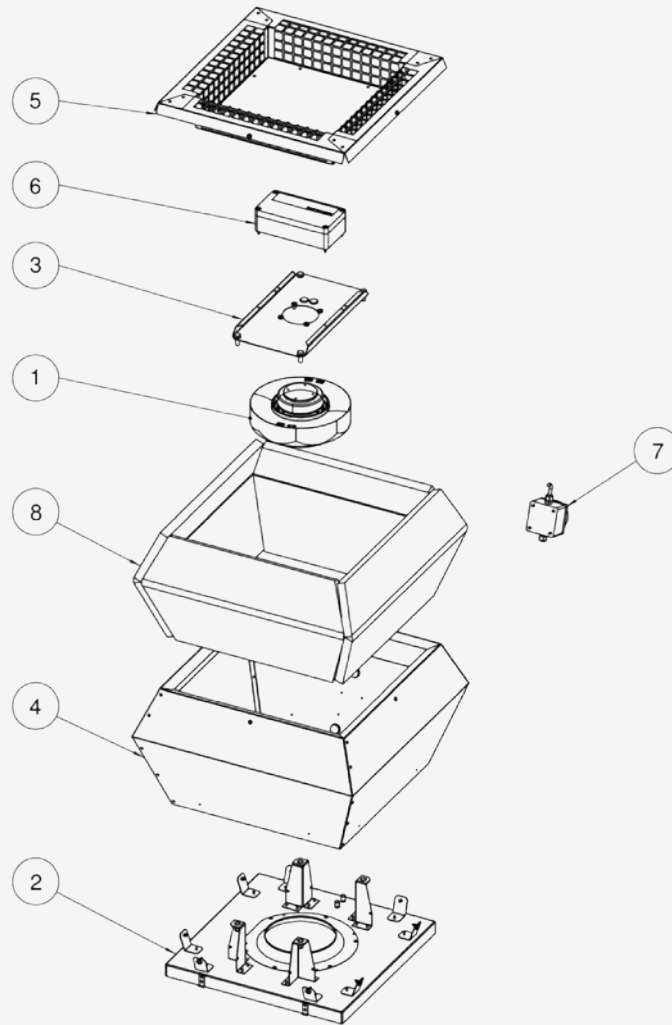
Collective fans for the terrace / roof

VTZ



| Collective fans for the terrace / roof | | VTZ0 | VTZ1 | VTZ2 | VTZ3 |
|--|-------------------|------------------|------------------|------------------|------------------|
| Standard code | | VTZ1075 | VTZ1076 | VTZ1077 | VTZ1078 |
| Airflow characteristics | | | | | |
| Max. airflow @ 100 Pa | m ³ /h | 500 | 1 000 | 1 750 | 2 750 |
| Max. pressure | Pa | 300 | 300 | 300 | 300 |
| Pressure control device | | ■ | ■ | ■ | ■ |
| Acoustics | | | | | |
| Max. acoustic power L _w | dB(A) | 72 | 72 | 66 | 81 |
| Max. sound pressure level L _p @ 3 m | dB(A) | 58 | 55 | 49 | 63 |
| Electrics | | | | | |
| Power supply | | 230 VAC / 50 Hz | 230 VAC / 50 Hz | 230 VAC / 50 Hz | 230 VAC / 50 Hz |
| Motor type | | EC | EC | EC | EC |
| Max. power | W | 83 | 168 | 150 | 450 |
| IP degrees of protection (motor) | | IP 54 | IP 54 | IP 54 | IP 54 |
| Characteristics | | | | | |
| Weight | kg | 10 | 14 | 21 | 23 |
| Colour | | metal | metal | metal | metal |
| Material (envelope) | | galvanised steel | galvanised steel | galvanised steel | galvanised steel |
| Dimensions (A - B - H) | mm | 445 - 340 - 290 | 547 - 440 - 338 | 720 - 600 - 400 | 720 - 600 - 400 |
| Installation | | | | | |
| Connection | mm | 336 x 336 | 436 x 436 | 595 x 595 | 595 x 595 |
| Terrace installation | | ■ | ■ | ■ | ■ |
| Roof installation | | ■ | ■ | ■ | ■ |
| Attic installation | | - | - | - | - |
| Maintenance | | | | | |
| Proximity switch | | ■ | ■ | ■ | ■ |
| Access to propeller and ducts by swinging | | ■ | ■ | ■ | ■ |
| Working | | | | | |
| Direct driven propeller | | ■ | ■ | ■ | ■ |
| Max. speed | RPM | 3 200 | 3 230 | 1 520 | 2 180 |

Composition



| | |
|---|----------------------------|
| 1 | Fan propeller |
| 2 | Base |
| 3 | Motor support |
| 4 | Casing |
| 5 | Grille |
| 6 | Pressure control device |
| 7 | Supply |
| 8 | Thermal and acoustic foams |

VTZ

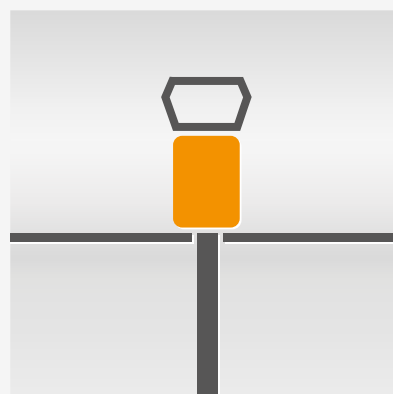
Which adaptor to choose according to the configuration?



AVT

Standard vertical adaptor for the terrace (square connection)

> p. 10



AVT-R

Standard vertical adaptor for the terrace (round connection)

> p. 11



AVTA

Acoustic vertical adaptor for the terrace (square connection)

> p. 12



AVPA

Acoustic vertical adaptor for the roof (square connection)

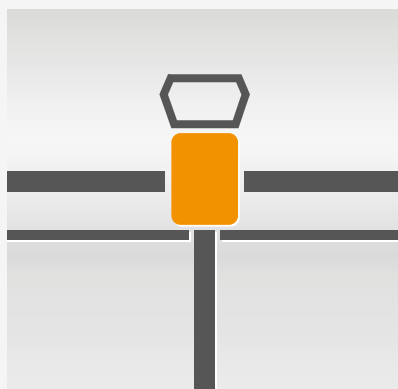
> p. 13



The VTZ fans require the use of an adaptation part which allows the connection to ventilation duct(s) and their chimney.

Designed with a **double-skin galvanised steel with reinforced thermal insulation**, the adaptors include one or several silencers that significantly limit the transmission of fans noise to dwellings. Their quality of manufacture ensures to installations a **noteworthy durability and longevity**.

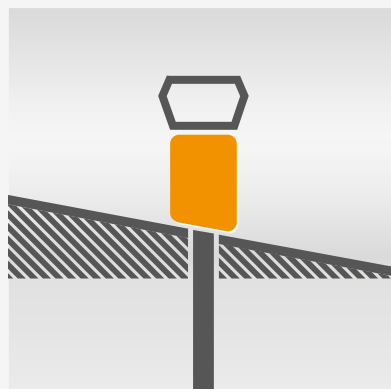
This document introduces the main adaptors and accessories offered by Aereco; **any other specific geometrical requirement can be achieved with custom-built construction** (contact us with plans).



AMTA-R

Acoustic multi round connexions adaptor for terrace

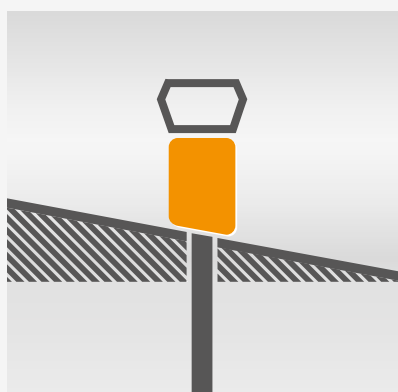
> p. 14



AVP-R

Standard vertical adaptor for the roof (round connection)

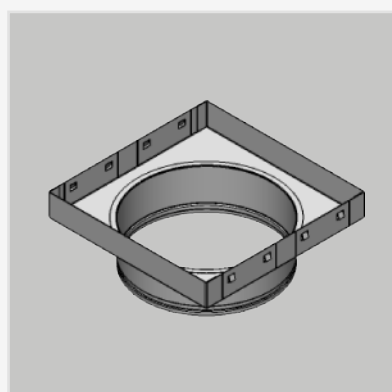
> p. 17



AVP

Standard vertical adaptor for the roof (square connection)

> p. 18



Accessories

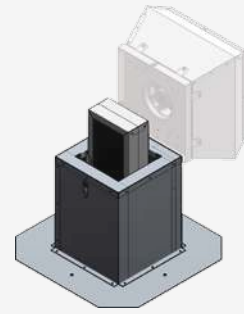
> p. 20

Standard vertical adaptor for the terrace (square connection)

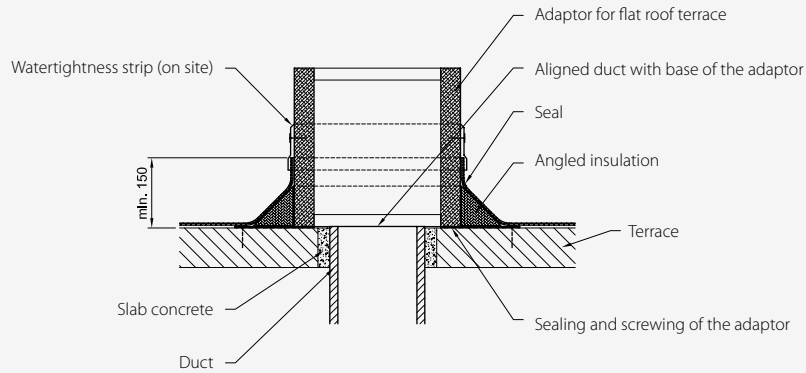
AVT

- Square duct connected from below
- Removable sound trap: acoustic attenuation of about 12 dB at 250 Hz
- Reinforced thermal insulation (50 mm double-skin + thermal foam)
- Integrated cable duct
- Swinging system
- Galvanised steel

Performances: see p.26

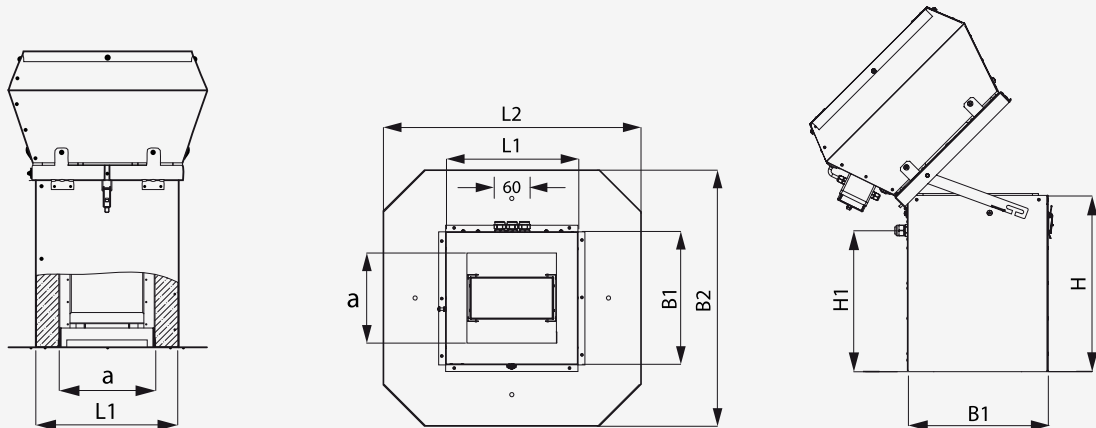


Installation



Dimensions

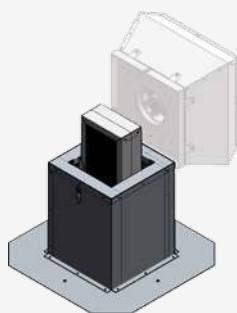
| Model | | AVT 0 | AVT 1 | AVT 23 |
|--------------|----|-------|-------|-------------|
| Matching fan | | VTZ0 | VTZ1 | VTZ2 / VTZ3 |
| L1 | mm | 320 | 420 | 580 |
| B1 | mm | 320 | 420 | 580 |
| L2 | mm | 520 | 620 | 780 |
| B2 | mm | 520 | 620 | 780 |
| H* | mm | 700 | 700 | 700 |
| H1 | mm | 620 | 620 | 620 |
| a | mm | 216 | 316 | 476 |
| Weight | kg | 16 | 23 | 40 |



*AVT adaptors also exist in H = 400 mm (on specific request).

AVT-R

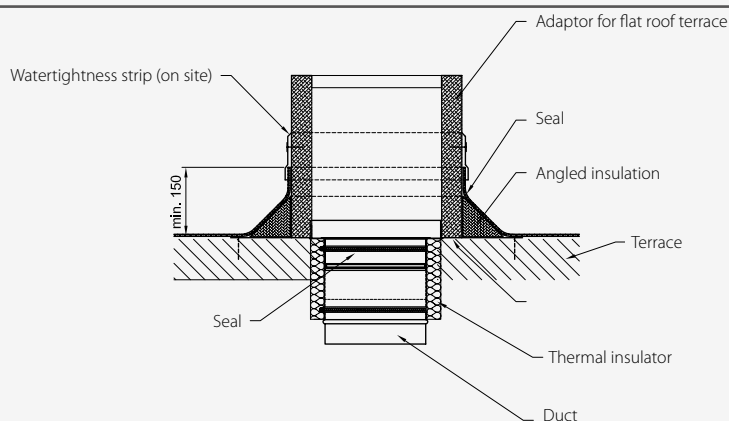
Standard vertical adaptor for the terrace (round connection)



- Round duct connected from below
- Removable sound trap: acoustic attenuation of about 12 dB at 250 Hz
- Reinforced thermal insulation (50 mm double-skin + thermal foam)
- Integrated cable duct
- Swinging system
- Galvanised steel

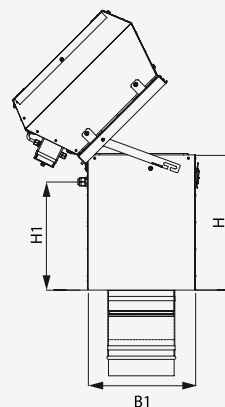
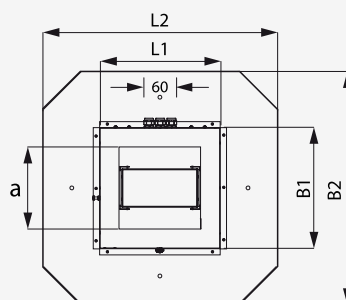
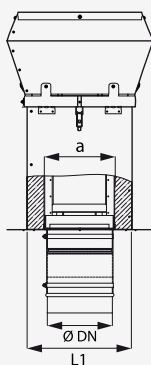
Performances: see p.26

Installation



Dimensions

| Model | | AVT-R 0 | AVT-R 1 | AVT-R 2 | AVT-R 3 |
|--------------|----|---------|---------|---------|---------|
| Matching fan | | VTZ0 | VTZ1 | VTZ2 | VTZ3 |
| L1 | mm | 320 | 420 | 580 | 580 |
| B1 | mm | 320 | 420 | 580 | 580 |
| L2 | mm | 520 | 620 | 780 | 780 |
| B2 | mm | 520 | 620 | 780 | 780 |
| H* | mm | 700 | 700 | 700 | 700 |
| H1 | mm | 620 | 620 | 620 | 620 |
| a | mm | 216 | 316 | 476 | 476 |
| Ø DN | mm | 200 | 250 | 355 | 400 |
| L | mm | 124 | 124 | 144 | 144 |
| l | mm | 80 | 80 | 100 | 100 |
| Weight | kg | 16 | 23 | 40 | 40 |



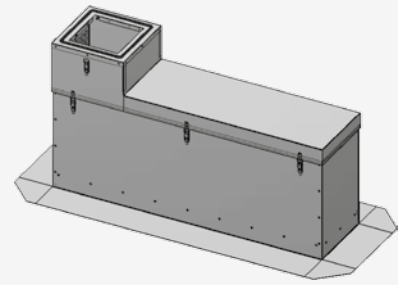
*AVT-R adaptors also exist in H = 400 mm (on specific request).

Acoustic vertical adaptor for the terrace (square connection)

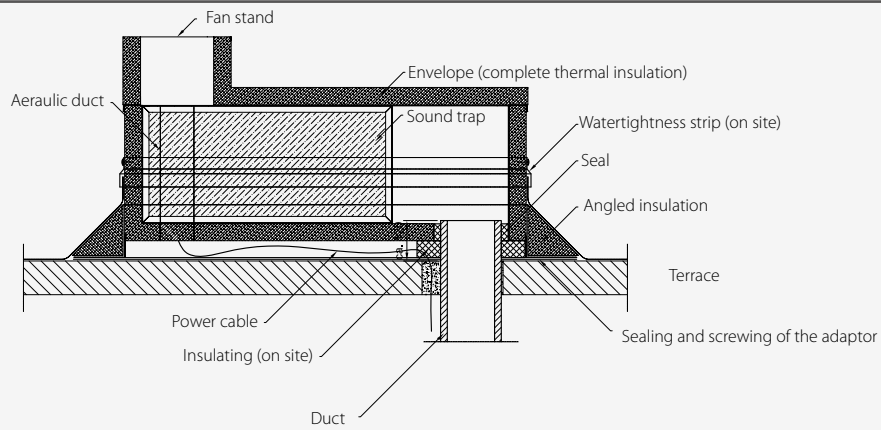
AVTA

- Square duct connected from below
- Removable sound trap: acoustic attenuation of about 18 dB at 250 Hz
- Reinforced thermal insulation (50 mm double-skin + thermal foam)
- Integrated cable duct
- Swinging system
- Galvanised steel

Performances: see p.26

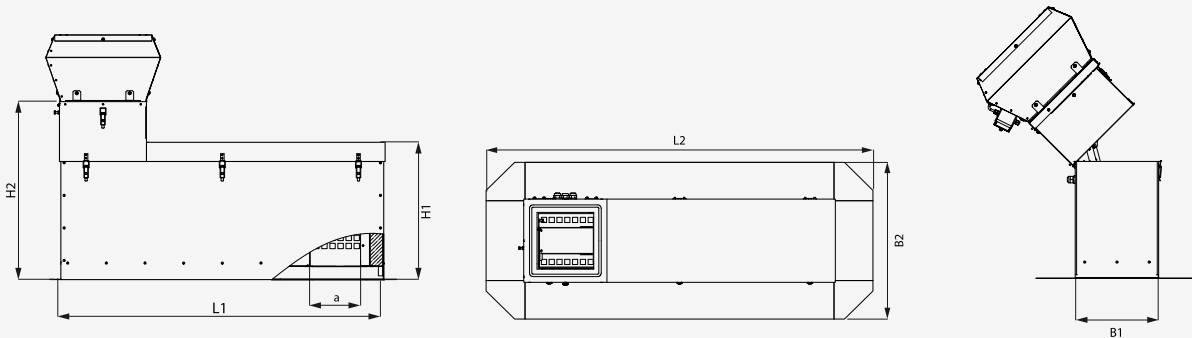


Installation



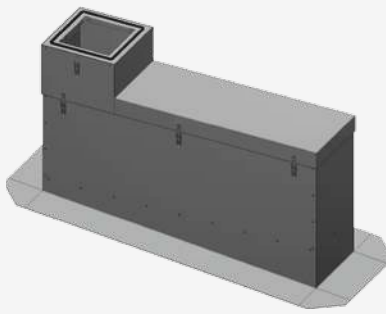
Dimensions

| Model | | AVTA 0 | AVTA 1 | AVTA 23 |
|--------------|----|--------|--------|-------------|
| Matching fan | | VTZ0 | VTZ1 | VTZ2 / VTZ3 |
| L1 | mm | 1 200 | 1 200 | 1 200 |
| L2 | mm | 1 500 | 1 500 | 1 500 |
| H1 | mm | 500 | 500 | 500 |
| H2 | mm | 650 | 650 | 650 |
| B1 | mm | 320 | 420 | 580 |
| B2 | mm | 620 | 720 | 880 |
| a | mm | 200 | 290 | 400 |
| Weight | kg | 29 | 36 | 48 |



AVPA

Acoustic vertical adaptor for the roof (square connection)

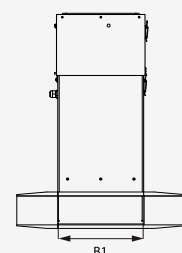
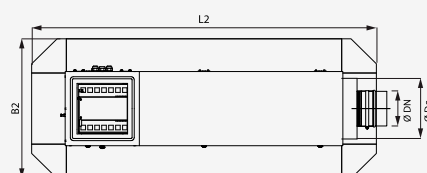
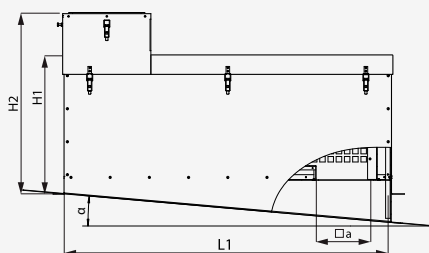


- Square duct connected from below
- Removable sound trap: acoustic attenuation of about 18 dB at 250 Hz
- Fits to several roof slopes from 5° to 15°(custom-built in factory)
- Reinforced thermal insulation (50 mm double-skin + thermal foam)
- Integrated cable duct
- Swinging system
- Galvanised steel



Dimensions

| Model | | AVPA 0 | AVPA 1 | AVPA 23 |
|--------------|----|--------|--------|-------------|
| Matching fan | | VTZ0 | VTZ1 | VTZ2 / VTZ3 |
| L1 | mm | 1 200 | 1 200 | 1 200 |
| L2 | mm | 1 500 | 1 500 | 1 500 |
| H1 | mm | 500 | 500 | 500 |
| H2 | mm | 650 | 650 | 650 |
| B1 | mm | 320 | 420 | 580 |
| B2 | mm | 620 | 720 | 880 |
| a | mm | 200 | 290 | 450 |
| α | ° | 5 -15 | 5 - 15 | 5 - 15 |
| Weight | kg | 30 | 37 | 48 |

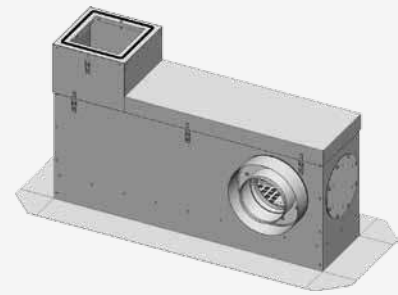


Acoustic multi round connexions adaptor for terrace

AMTA-R

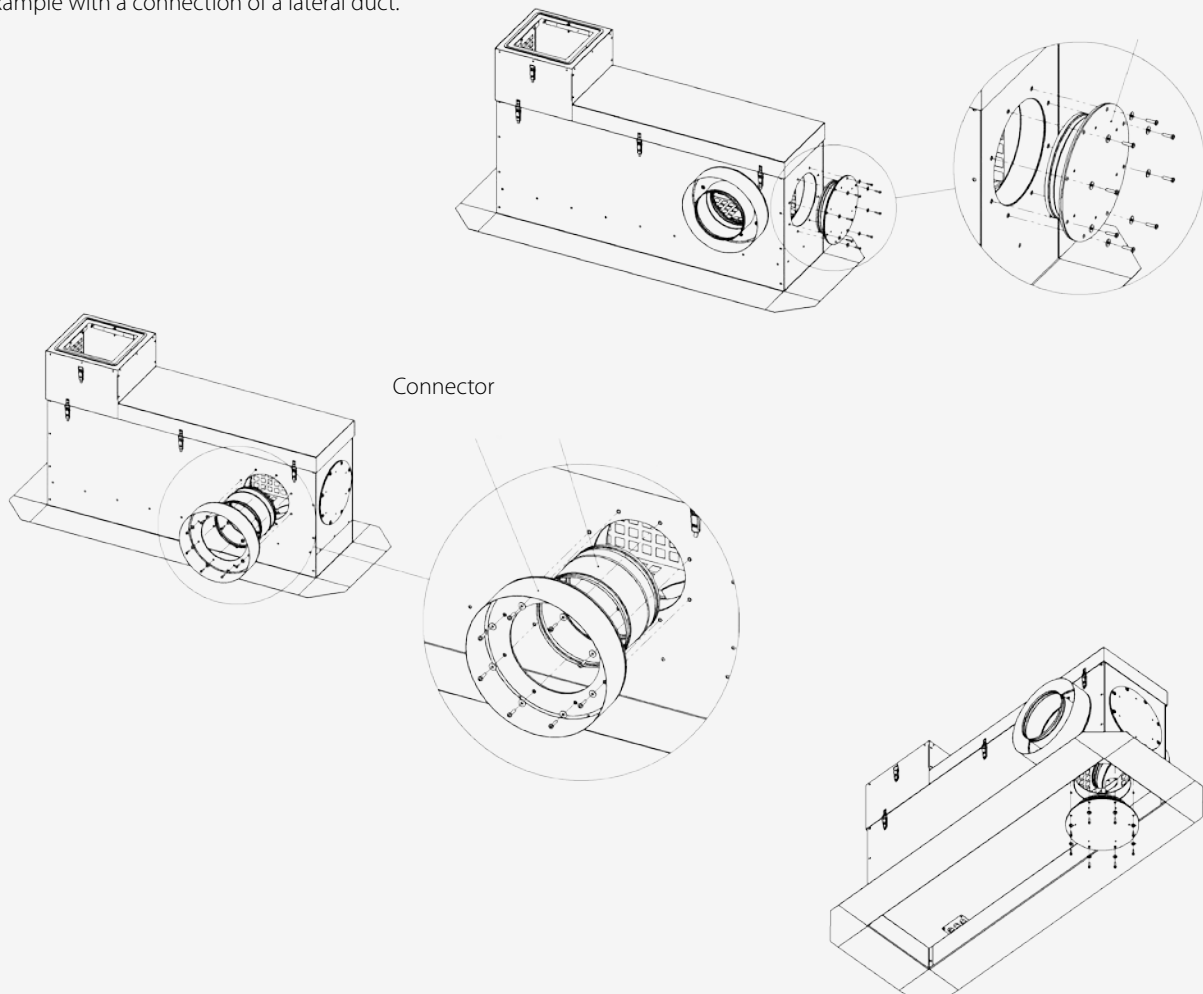
- Multiple round duct connections - multiple possibilities
- Connects up to 4 ducts
- Removable sound trap: acoustic attenuation of about 18 dB at 250 Hz
- Reinforced thermal insulation (50 mm double-skin + thermal foam)
- Integrated cable duct
- Swinging system
- Galvanised steel

Performances: see p.26



Configuration

Example with a connection of a lateral duct.



Accessories

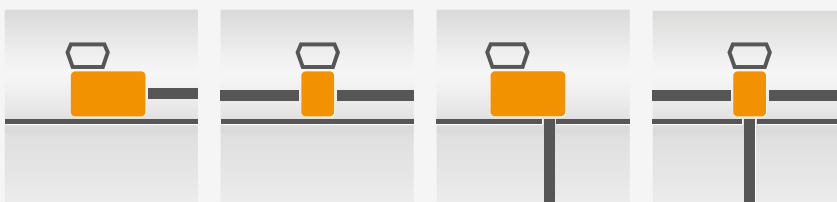
Stoppers (ref. STP)

Connectors

| Model | | CON200S | CON200B | CON250 | CON355 | CON400 |
|-------|----|------------|--------------|--------|--------|--------|
| ØDN | mm | 200 (side) | 200 (bottom) | 250 | 355 | 400 |

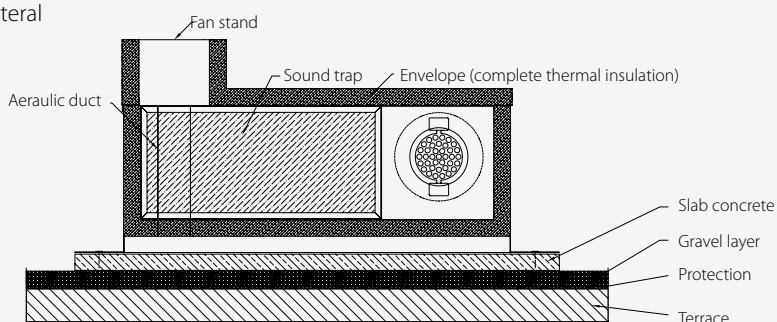
AMTA-R is standardly delivered with 2 x stoppers and 2 x connectors (diameter to be precised at the order).
Stoppers and connectors are fixed with Ø5mm metric threads (supplied).

AMTA-R adaptor enables to meet various duct configuration with a single product, using stoppers and round connectors: 3 possibilities to connect horizontal duct + 1 connection below (vertical duct).



Installation

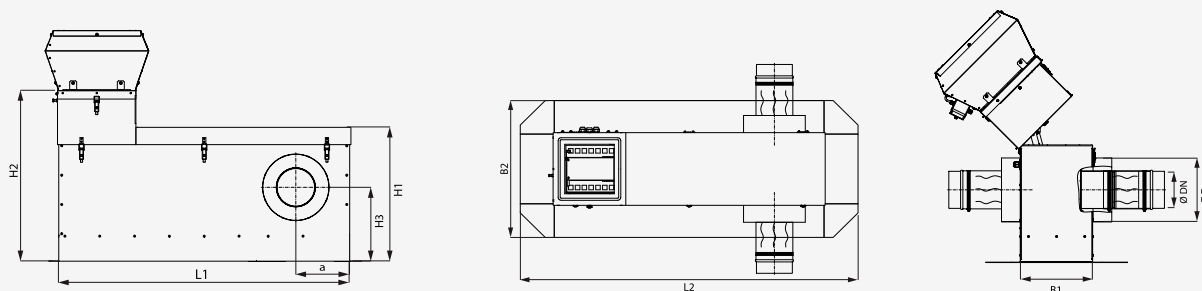
Configuration with a lateral connection



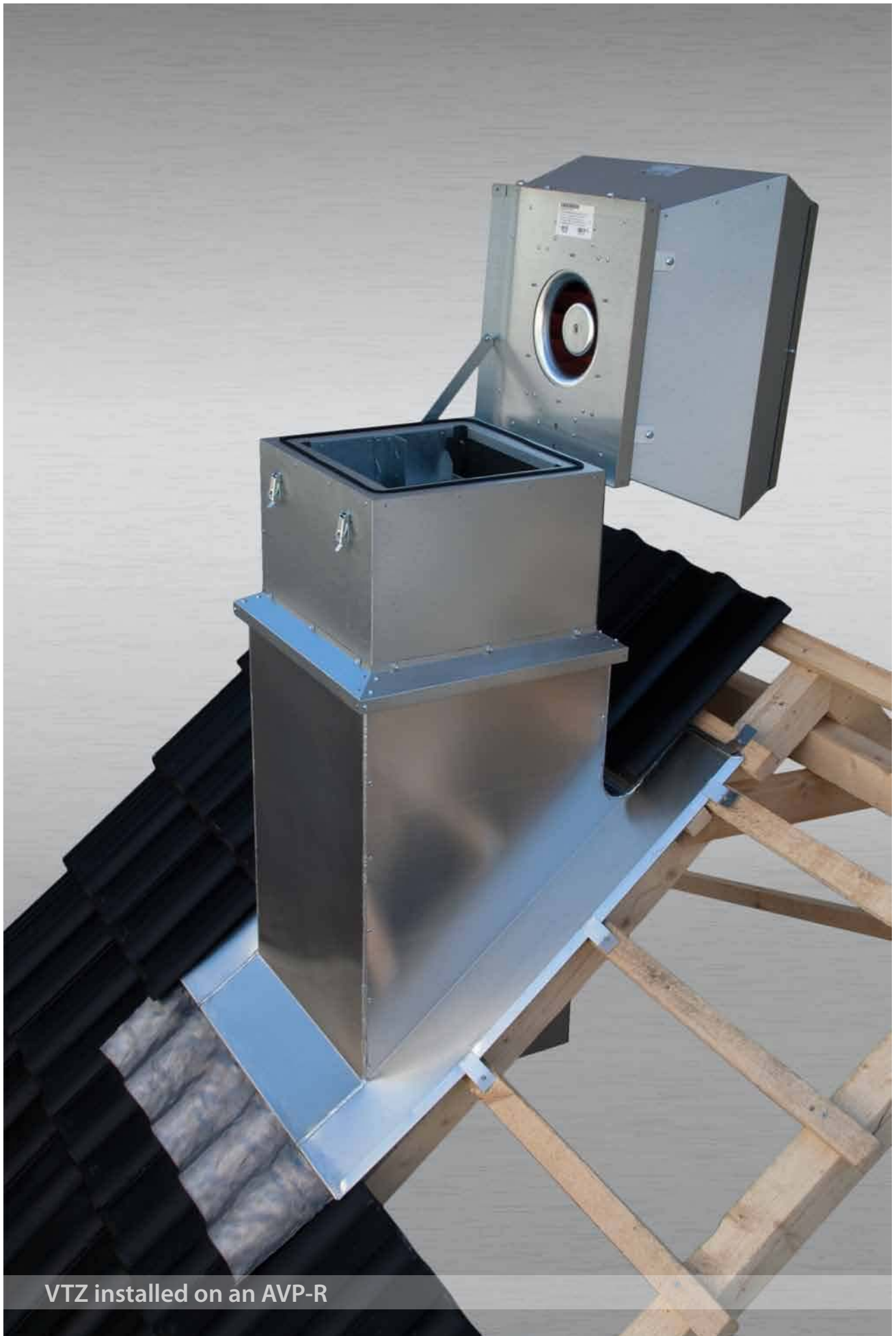
Dimensions

| Model | | AMTA-R 0 | AMTA-R 1 | AMTA-R 2 | AMTA-R 3 |
|--------------|----|----------|----------|----------|----------|
| Matching fan | | VTZ0 | VTZ1 | VTZ2 | VTZ3 |
| L1 | mm | 1 200 | 1 200 | 1 200 | 1 200 |
| L2 | mm | 1 500 | 1 500 | 1 500 | 1 500 |
| H1 | mm | 555 | 605 | 755 | 755 |
| H2 | mm | 705 | 755 | 905 | 905 |
| H3 | mm | 310 | 350 | 410 | 410 |
| B1 | mm | 320 | 420 | 580 | 580 |
| B2 | mm | 620 | 720 | 880 | 880 |
| ØDN | mm | 200 | 250 | 355 | 400 |
| ØDa | mm | 310 | 360 | 465 | 465 |
| a | mm | 220 | 280 | 280 | 280 |
| Weight | kg | 29 | 36 | 48 | 48 |

Configuration with 2 lateral connections:



AMTA-R can also be built with a 5° or 15° angle (on specific request).

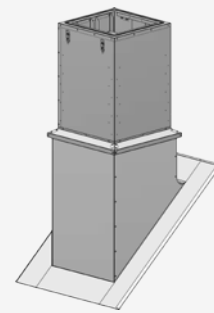


VTZ installed on an AVP-R

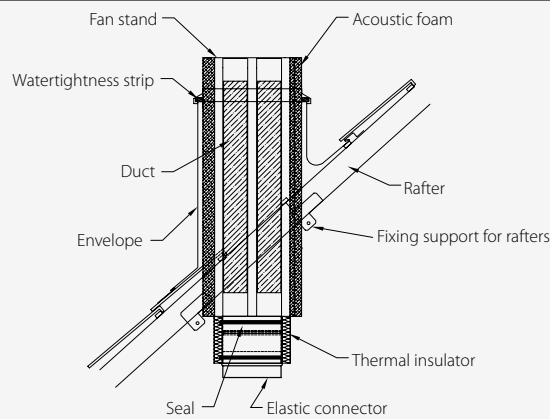
AVP-R

Standard vertical adaptor for the roof (round connection)

- Round duct connected from below
- Removable sound trap: acoustic attenuation of about 18 dB at 250 Hz
- Fits to every roof slopes (custom-built in factory)
- Reinforced thermal insulation (50 mm double-skin + thermal foam)
- Integrated cable duct
- Swinging system
- Galvanised steel



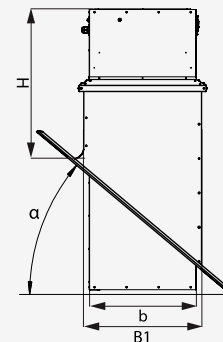
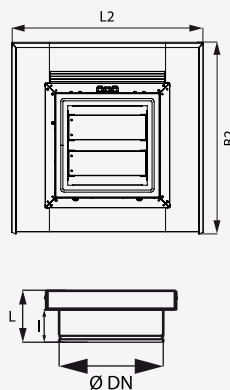
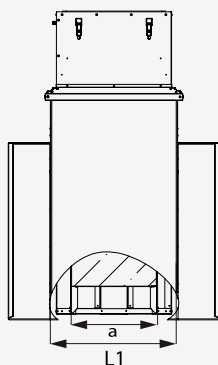
Installation



Dimensions

| Model | | AVP-R 0 | AVP-R 1 | AVP-R 2 | AVP-R 3 |
|----------------------|----|---------------------------------|-------------|-------------|-------------|
| Matching fan | | VTZ0 | VTZ1 | VTZ2 | VTZ3 |
| L1 | mm | 363 | 463 | 623 | 623 |
| B1 | mm | 363 | 463 | 623 | 623 |
| L2 | mm | 670 | 770 | 930 | 930 |
| B2 | mm | depending on roof slopes angles | | | |
| H | mm | 408 ... 880 | 480 ... 880 | 480 ... 880 | 480 ... 880 |
| a | mm | 215 | 315 | 475 | 475 |
| b | mm | 320 | 420 | 580 | 580 |
| ØDN | mm | 200 | 250 | 355 | 400 |
| L / l | mm | 212 / 80 | 312 / 80 | 472 / 100 | 472 / 100 |
| Acoustic duct length | mm | 1 100 | 1 100 | 1 100 | 1 100 |
| Weight | kg | 35 | 44 | 58 | 58 |

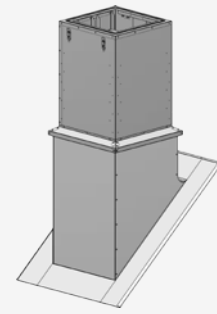
α-angle is adapted to the configuration (custom-built).



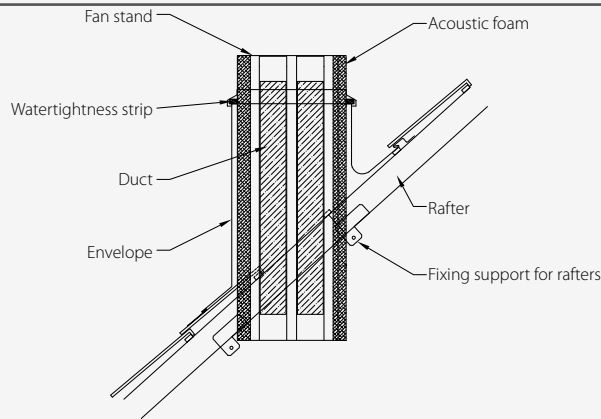
Standard vertical adaptor for the roof (square connection)

AVP

- Square duct connected from below
- Removable sound trap: acoustic attenuation of about 18 dB at 250 Hz
- Fits to every roof slopes (custom-built in factory)
- Reinforced thermal insulation (50 mm double-skin + thermal foam)
- Integrated cable duct
- Swinging system
- Galvanised steel



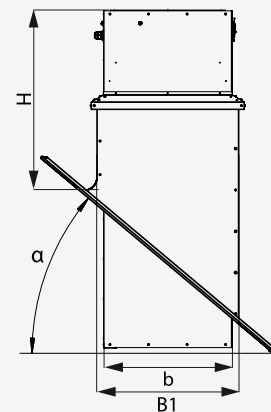
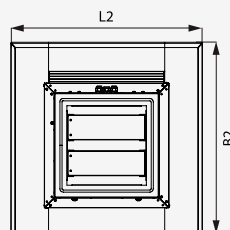
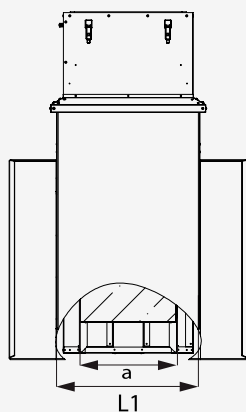
Installation



Dimensions

| Model | | AVP 0 | AVP 1 | AVP 23 |
|----------------------|----|---------------------------------|-------------|-------------|
| Matching fan | | VTZ0 | VTZ1 | VTZ2 / VTZ3 |
| L1 | mm | 363 | 463 | 623 |
| B1 | mm | 363 | 463 | 623 |
| L2 | mm | 670 | 770 | 930 |
| B2 | mm | depending on roof slopes angles | | |
| H | mm | 408 ... 880 | 480 ... 880 | 480 ... 880 |
| a | mm | 215 | 315 | 475 |
| b | mm | 320 | 420 | 580 |
| ØDN | mm | 200 | 250 | 355 |
| Acoustic duct length | mm | 1 100 | 1 100 | 1 100 |
| Weight | kg | 35 | 44 | 58 |

α-angle is adapted to the configuration (custom-built).



Integrated pressure control device



- Maintains a constant pressure of the fan independently from the airflow
- 2 configurable pressure levels (reduced and nominal mode)
- Commutation by free switch between the reduced and the nominal mode
- Pressure settings from 20 to 300 Pa
- 0-10 V input to control the fan
- 0-10 V output for external activation or information

The VCZ and VTZ fans integrate a pressure control device that defines the working pressure. It is automatically regulated, optimizing the working of the system with demand controlled extract units.

Working and settings

The pressure control unit automatically regulates the rotation speed of the fan. Pressure level is defined by using jumpers. The measured pressure is displayed on a digital display in the unit.

0-10 V input

In addition an external device (0 - 10 V) can be connected to control the fan, working as an ON/OFF switch:

- . input = 0 V → stop of the fan
- . $0,3\text{ V} \leq \text{input} \leq 10\text{ V}$ → run of the fan at the set pressure level (nominal or reduced mode)

Nominal and reduced pressure levels

As an option two pressure levels can be set (nominal and reduced level). One can switch between nominal and reduced pressure level by operating a potential free switch (closed = reduced pressure level). This feature can be issued par example to operate the system with reduced power and therefore reduced noise during the night, controlled by an external clock.

0-10 V output

The pressure control unit generates an output signal (0 - 10 V) to drive the fan or other external actors or to indicate the fans pitch on external displays or control units.

Fan speed output (from early 2013)

An output for fan speed information is integrated in the pressure control device, through a 4 to 20 mA signal.

Automatic control and diagnosis

The unit permanently checks pressure values read by the pressure gauge. If an inordinate difference between the recommended pressure and the real pressure is noticed, an error message is displayed on the screen (it requires from 1 to 5 minutes to detect an error).

LED indicators

The available power supply (voltage) is displayed by a green LED.

Operating the unit in the reduced pressure level mode is indicated by a yellow LED.

Power supply default, pressure sensor error or significant deviations between the set pressure level and the measured pressure level are indicated by a red LED and additionally by a potential free output switch.

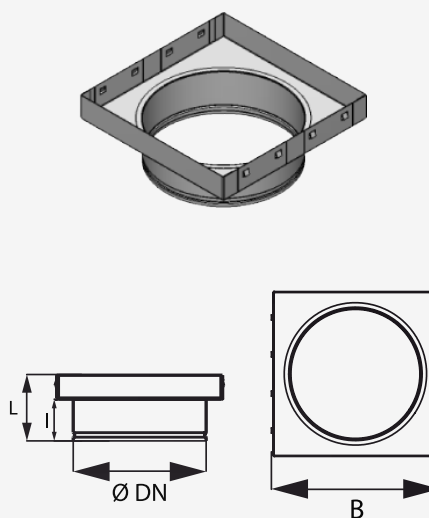
| | |
|---------------------------|--|
| Nominal pressure range | 20 - 300 Pa |
| Reduced pressure level | 0 Pa / or 90% to 30% of the set nominal pressure (10% steps) |
| Nominal tension / voltage | 230 VAC, 50 Hz \pm 5% |
| Nominal power | 100 mA |
| Internal protection | 315 mA fuse |
| Protection | IP 54 |
| Alarm relay | 230 V AC, 2 A (free switch) |
| Driving signal | 0-10 VDC, 1 mA |
| External control | > 0,3 VDC |

Connector for round ducts

RC

- Connecting round ducts to square bases of the adaptors.
- Converts to "R"-version adaptors shown in this document
- Easy to install by clipping
- 4 sizes for VTZ models from 0 to 3
- Galvanised steel

| Model | | RC 0 | RC 1 | RC 2 | RC 3 |
|--------------|----|------|------|------|------|
| Matching fan | | VTZ0 | VTZ1 | VTZ2 | VTZ3 |
| ØDN | mm | 200 | 250 | 355 | 400 |
| L | mm | 124 | 124 | 144 | 144 |
| B | mm | 212 | 312 | 472 | 472 |
| l | mm | 80 | 80 | 100 | 100 |

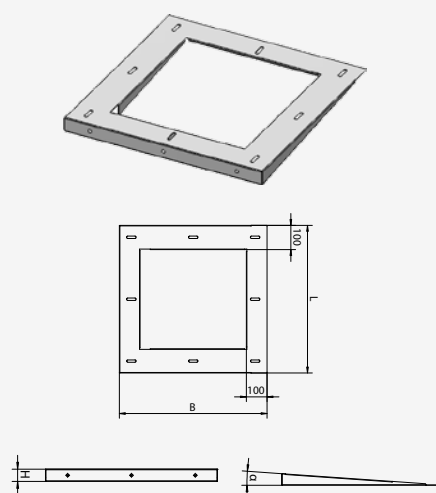


Light slope corrector

PC

- Allows installation of VTZ adaptors with square base on light slopes
- Exists in 3° and 4° versions
- Adjusts the slope with slots (compensation angle about $\pm 0,5^\circ$)
- 4 sizes for VTZ models from 0 to 3
- Galvanised steel

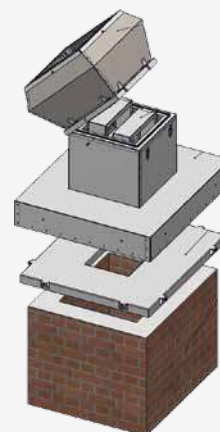
| Model | | PC0-3 | PC0-4 | PC1-3 | PC1-4 | PC23-3 | PC23-4 |
|--------------|----|-------|-------|-------|-------|-------------|--------|
| Matching fan | | VTZ0 | | VTZ1 | | VTZ2 / VTZ3 | |
| α | ° | 3 | 4 | 3 | 4 | 3 | 4 |
| L | mm | 520 | | 620 | | 780 | |
| B | mm | 520 | | 620 | | 780 | |
| h | mm | 28 | 37 | 33 | 44 | 41 | 55 |



Chimney stack adaptor

CC

- Custom-built adaptor for chimney stack (specify plan when ordering)
- 4 sizes for VTZ models from 0 to 3
- Galvanised steel

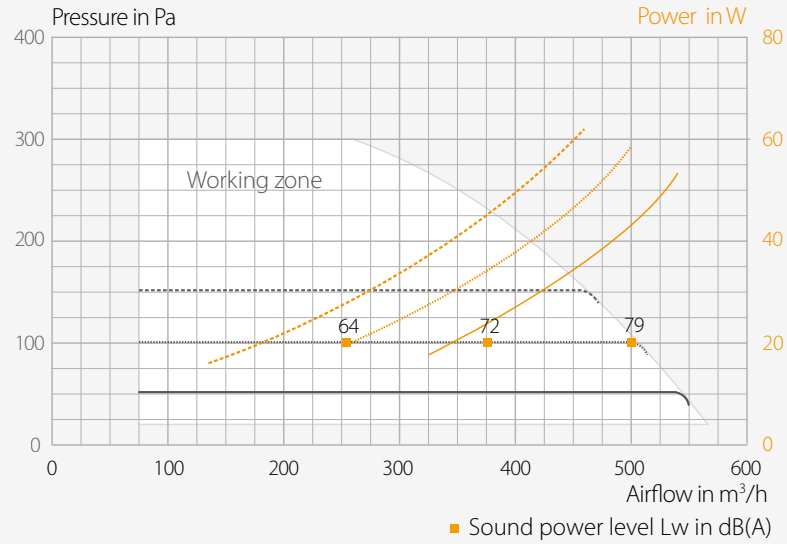


Many additional accessories which allow to fit in different situations and configurations are available or can be custom-built on plan. Please contact us for your requests.



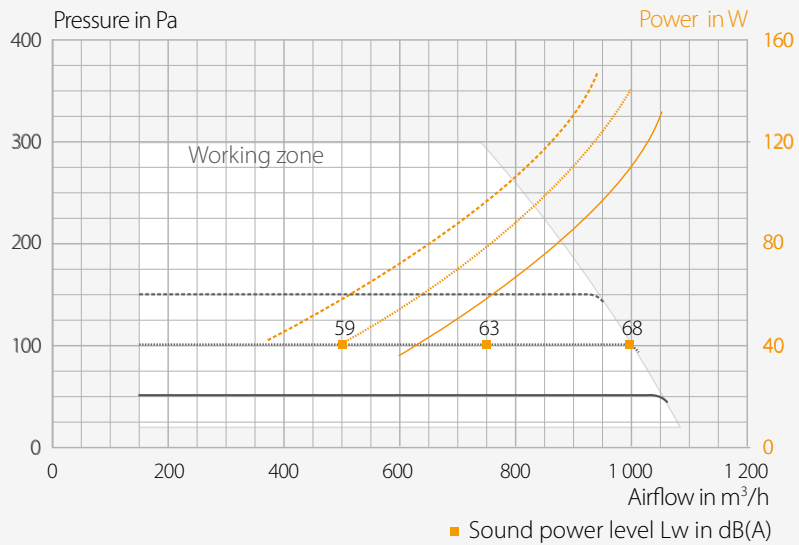
Each curve represents an example of the fan working speed with use of the pressure control device.

VCZ0



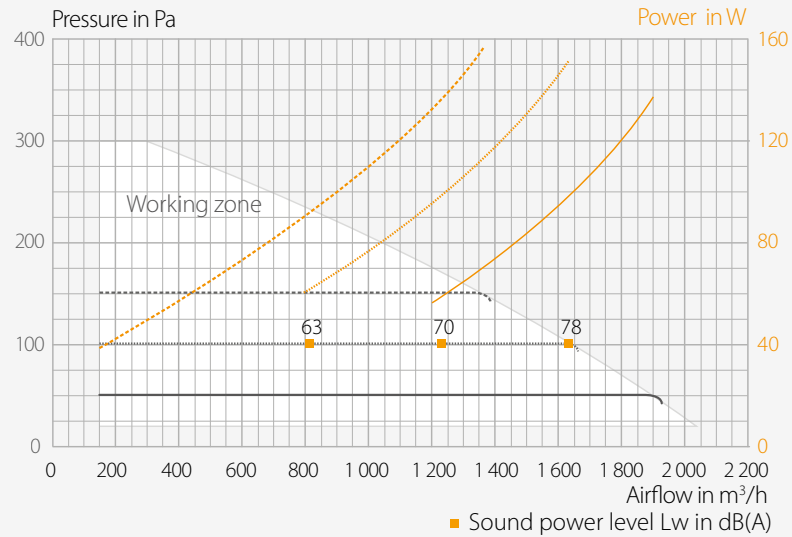
- examples :
- setting « 50 Pa »
 - setting « 100 Pa »
 - - - - - setting « 150 Pa »
 - the limit of the working zone determines the maximum airflow / pressure available at the fan

VCZ1



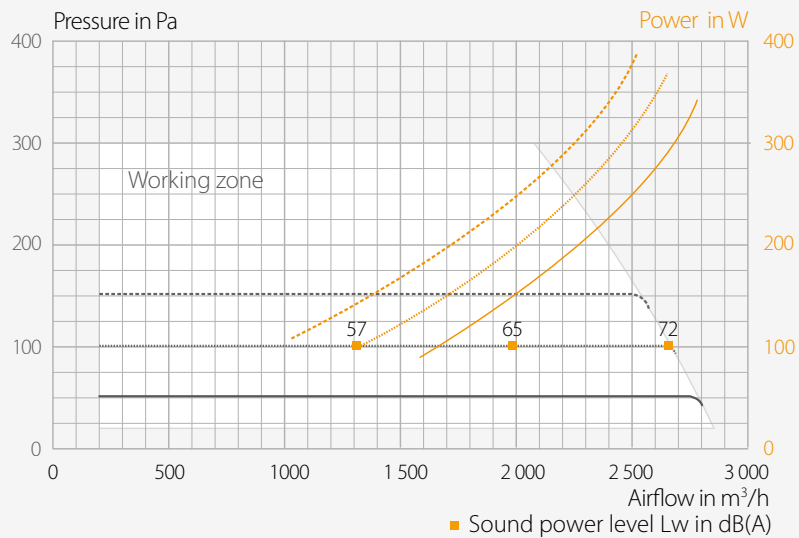
- examples :
- setting « 50 Pa »
 - setting « 100 Pa »
 - - - - - setting « 150 Pa »
 - the limit of the working zone determines the maximum airflow / pressure available at the fan

VCZ2



- examples :
- setting « 50 Pa »
 - setting « 100 Pa »
 - setting « 150 Pa »
 - the limit of the working zone determines the maximum airflow / pressure available at the fan

VCZ3



- examples :
- setting « 50 Pa »
 - setting « 100 Pa »
 - setting « 150 Pa »
 - the limit of the working zone determines the maximum airflow / pressure available at the fan

Data measured by ILK Dresden

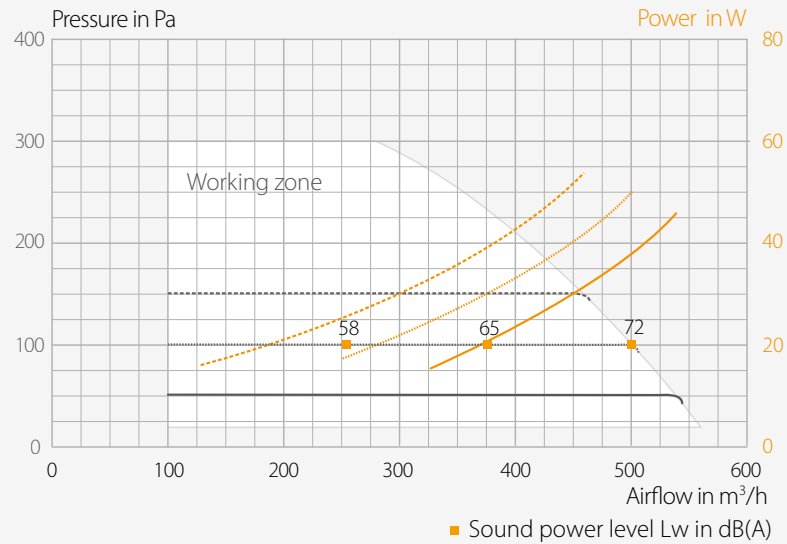


The following charts describe the fan alone without adaptation part



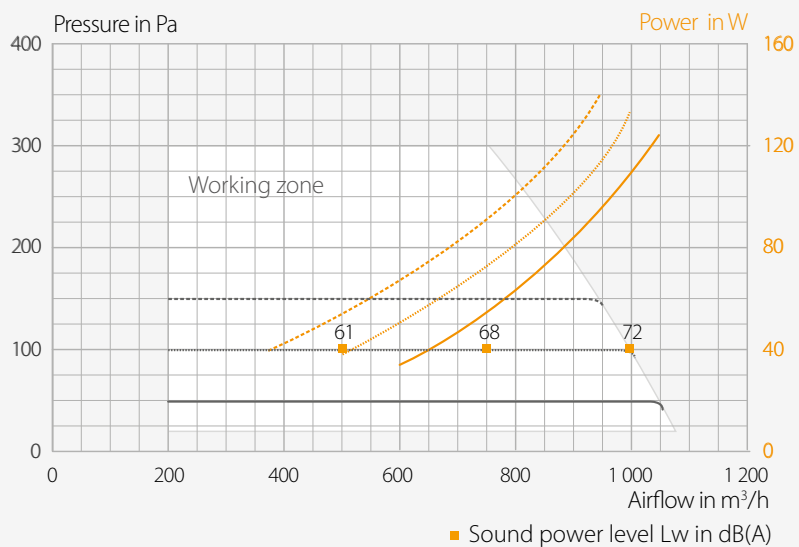
Each curve represents an example of the fan working speed with use of the pressure control device.

VTZ0



examples : — setting « 50 Pa » ······ setting « 100 Pa »
 ······ setting « 150 Pa » — the limit of the working zone determines
 the maximum airflow / pressure
 available at the fan

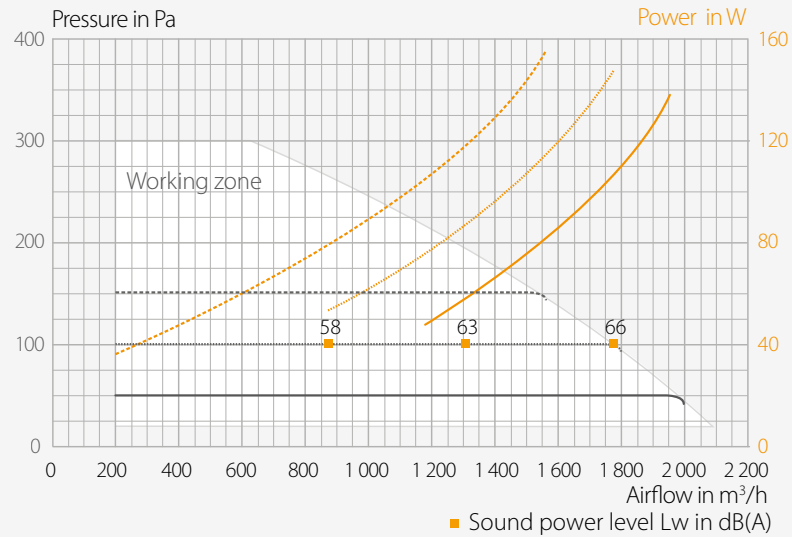
VTZ1



examples : — setting « 50 Pa » ······ setting « 100 Pa »
 ······ setting « 150 Pa » — the limit of the working zone determines
 the maximum airflow / pressure
 available at the fan

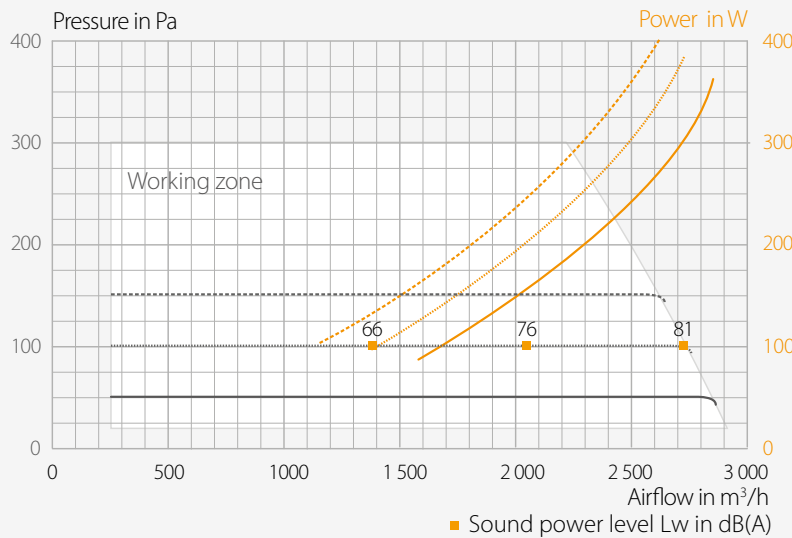


VTZ2



- examples :
- setting « 50 Pa »
 - setting « 100 Pa »
 - - - - - setting « 150 Pa »
 - the limit of the working zone determines the maximum airflow / pressure available at the fan

VTZ3



- examples :
- setting « 50 Pa »
 - setting « 100 Pa »
 - - - - - setting « 150 Pa »
 - the limit of the working zone determines the maximum airflow / pressure available at the fan

Data measured by ILK Dresden

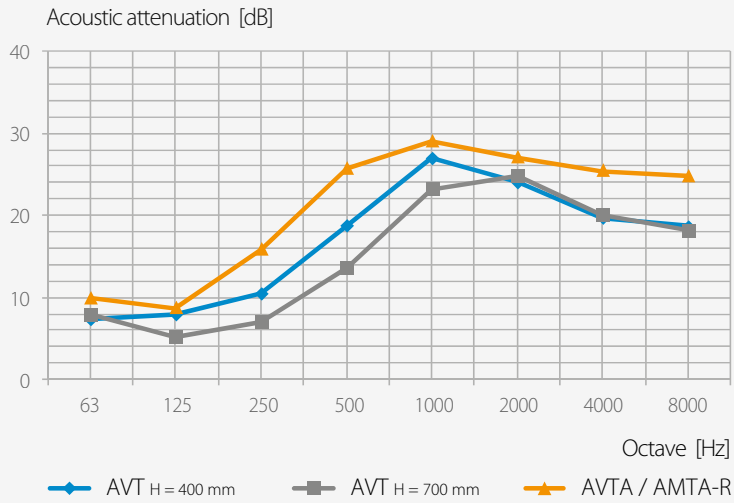
Acoustic power

| | | % of maximum airflow @ 100 Pa | | | VTZ0 | | | VTZ1 | | |
|---|-------------------|-------------------------------|--------|-------|------|------|-------|------|-----|--|
| | | 50 % | 75 % | 100 % | 50 % | 75 % | 100 % | | | |
|  | AVT H = 400 mm | Lw, A | dB (A) | 48 | 56 | 61 | 50 | 59 | 61 | |
| | | Lp, A @ 3m | dB (A) | 43 | 51 | 58 | 43 | 50 | 55 | |
| | | Power | W | 21 | 36 | 62 | 43 | 86 | 165 | |
| | AVT H = 700 mm | Lw, A | dB (A) | 46 | 53 | 58 | 45 | 54 | 56 | |
| | | Lp, A @ 3m | dB (A) | 43 | 51 | 58 | 43 | 50 | 55 | |
| | | Power | W | 21 | 36 | 62 | 43 | 86 | 165 | |
|  | AVTA / AMTA-R | Lw, A | dB (A) | 43 | 50 | 55 | 42 | 50 | 52 | |
| | | Lp, A @ 3m | dB (A) | 43 | 51 | 58 | 43 | 50 | 55 | |
| | | Power | W | 20 | 37 | 67 | 50 | 92 | 165 | |

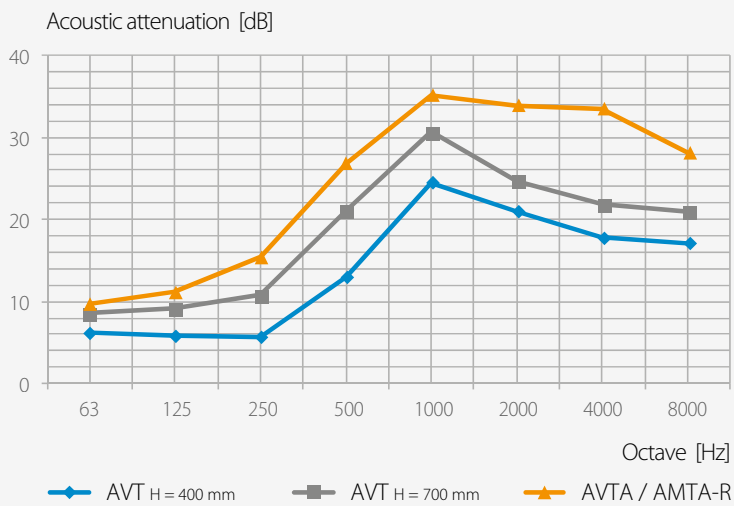
| | | % of maximum airflow @ 100 Pa | | | VTZ2 | | | VTZ3 | | |
|---|-------------------|-------------------------------|--------|-------|------|------|-------|------|-----|--|
| | | 50 % | 75 % | 100 % | 50 % | 75 % | 100 % | | | |
|  | AVT H = 400 mm | Lw, A | dB (A) | 54 | 57 | 57 | 56 | 65 | 69 | |
| | | Lp, A @ 3m | dB (A) | 40 | 45 | 49 | 48 | 58 | 63 | |
| | | Power | W | 54 | 90 | 148 | 100 | 214 | 405 | |
| | AVT H = 700 mm | Lw, A | dB (A) | 50 | 52 | 53 | 51 | 59 | 63 | |
| | | Lp, A @ 3m | dB (A) | 40 | 45 | 49 | 48 | 58 | 63 | |
| | | Power | W | 54 | 90 | 148 | 100 | 214 | 405 | |
|  | AAVTA / AMTA-R | Lw, A | dB (A) | 49 | 51 | 50 | 48 | 55 | 59 | |
| | | Lp, A @ 3m | dB (A) | 40 | 45 | 49 | 48 | 58 | 63 | |
| | | Power | W | 53 | 91 | 153 | 105 | 225 | 430 | |

Acoustic attenuation

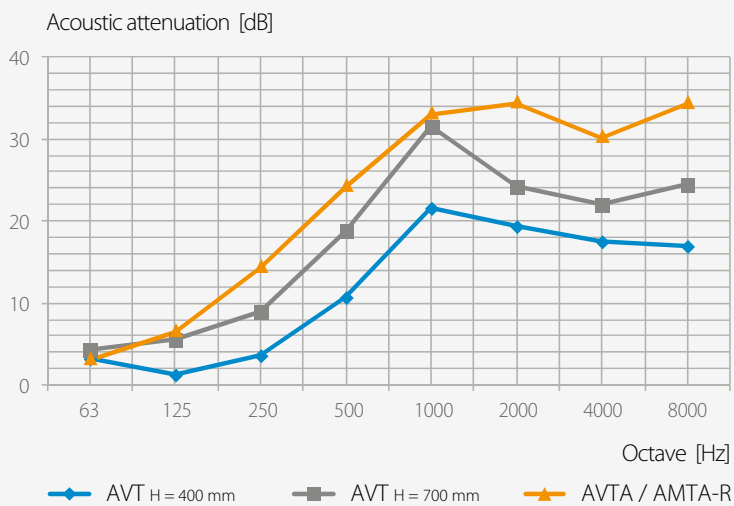
VTZ0



VTZ1



VTZ2 - VTZ3



Data measured by ILK Dresden



Aereco S.A.

9, allée du Clos des Charmes - Collégien
77615 Marne-la-Vallée Cedex 3 - FRANCE
tél. +33 1 60 06 26 63 - fax +33 1 60 06 22 11

www.aereco.com